



Project: \_\_\_\_\_

Location: \_\_\_\_\_

Item #: \_\_\_\_\_ Quantity: \_\_\_\_\_

Model #: \_\_\_\_\_

**MODEL: IMD-ERV35 BOTTLE COOLER**



**General Strengths**

- ✓ **Sanitation.** The interior cabinet is built with rounded corners (extensive radius for easy cleaning). Quick ability to take off shelves and slides for interior cleaning. Each cabinet has a drain at the bottom of the unit. When cleaning the unit make sure the drain hose is routed to a floor drain.
- ✓ **Doors.** Self-closing door system with permanent pressure. Stay open feature included when door remains open after 95 degrees. All doors include triple chamber door gaskets, easy to remove and snap in.
- ✓ **Control systems.** Higher precision in managing temperature settings. Greater ability to adjust temperature ranges as per the end user's requirement.
- ✓ **100% Tested.** All condenser units are tested 100%, in helium chambers to refrigerant leak detections.
- ✓ **Certified.** Audited and Certified by **INTERTEK** for compliance with UL 471 and NSF 7. AENOR audited and certified by internationally recognized firm. ISO 9001:2008 (Quality); ISO 14001:2004 (Environmental); OSHAS 18001:2007 (Prevention and Worker Safety)
- ✓ **Lighting.** LED lighting in the canopy and cabinet sides reduces the energy consumption by 80% and 90% compared to a traditional bulb. Provides a much better light quality.

MODEL	Dimensions (inches) (mm)			Nº Doors	Nº Shelves	Ref.	Ref. Weight (Lbs.) (gr.)	Temp. Range (°F) (°C)	Capacity (Cu. Ft.) (L)	Cond. Unit. H.P.	Case Amps 115 V.	Crated Weight (Lbs.) (Kg.)
	W	D	H									
IMD-ERV35	53-1/4	20-1/8	35-3/4	3	2	R134a	0.46	39°F/54°F	11.65	1/4	4.0	284
	1350	510	920									

ETL LISTED TO UL471 STANDARD AND SANITATION CLASSIFIED TO NSF7 – WE RESERVE THE RIGHT TO CHANGE SPECIFICATIONS WITHOUT PRIOR NOTICE



**Infrico USA Corp.**  
 7042 N.W. 46th Street  
 Miami, FL 33166  
 1.305.777.9599 Office  
 1.305.777.9598 Fax

[www.infrico.us](http://www.infrico.us)  
 service@infrico.com  
 sales@infrico.com

**APPROVALS: AVAILABLE AT:**

Revision: 03 Date: 06/05/2015 ERV35\_FT\_62\_3



Project: \_\_\_\_\_

Location: \_\_\_\_\_

Item #: \_\_\_\_\_ Quantity: \_\_\_\_\_

Model #: \_\_\_\_\_

**MODEL: IMD-ERV35 BOTTLE COOLER**

**STANDARD FEATURES**

➤ **Exterior**

- Exterior of PVC-coated steel,
- Completely injected compact structure,
- Integrated lock for doors.

➤ **Interior**

- Interior of PVC-coated steel,
- LED lighting.

➤ **Doors**

- Doors with integrated handle and blocked opening hinge,
- Door gasket easy to remove,
- Thermopane double glass,
- Door lock provided.

➤ **Insulation**

- High density CFC free Polyurethane foam.


➤ **Shelving**

- (2) interior shelves,
- Guides and shelves easy to take off for cleaning.

➤ **Refrigeration**

- Temperature and defrost regulated by digital controller,
- System of ventilated condensation *INFRICOOL*®,
- Forced evaporation system,
- Evaporative pan.

➤ **Electrical**

- Cord and NEMA 5-15P plug. 
- Electrical connection is 115V / 1ph / 60 Hz.

**OPTIONAL FEATURES**

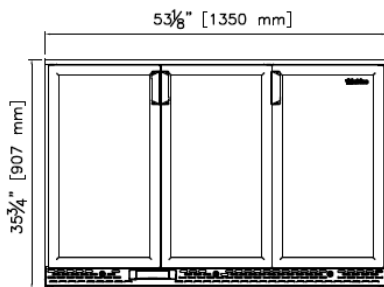
- ✓ Customizable Product,
- ✓ Illuminated head (6-3/4" high),
- ✓ Electrical connection is 220-230 V / 1ph / 50 Hz (plug type varies),
- ✓ Electrical connection is 220-230 V / 1ph / 60 Hz (plug type varies).

➤ **ETL Listed to UL471 Standard and Sanitation classified to NSF7.**

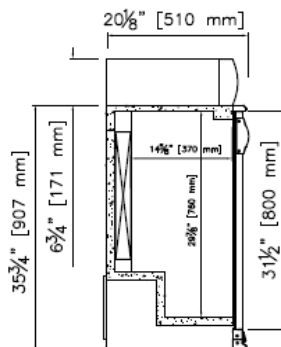


**PLAN VIEW**

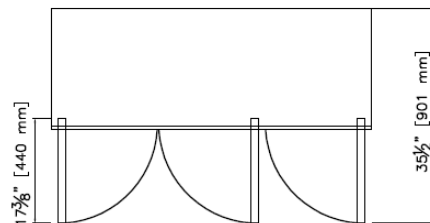
**ELEVATION**



**RIGHT VIEW**



**PLAN VIEW**



ETL LISTED TO UL471 STANDARD AND SANITATION CLASSIFIED TO NSF7 – WE RESERVE THE RIGHT TO CHANGE SPECIFICATIONS WITHOUT PRIOR NOTICE



**Infrico USA Corp.**  
 7042 N.W. 46th Street  
 Miami, FL 33166  
 1.305.777.9599 Office  
 1.305.777.9598 Fax

[www.infrico.us](http://www.infrico.us)  
 service@infrico.com  
 sales@infrico.com

**APPROVALS: AVAILABLE AT:**

Revision: 03 Date: 06/05/2015 ERV35\_FT\_62\_3